

06	05	04	03	02	01
07	08	09	10	11	12
18	17	16	15	14	13
19	20	21	22	23	24
30	29	28	27	26	25
31	32	33	34	35	36



### HUMBOLDT COUNTY

S1/2 NW1/4 & SW1/4 SEC. 14 T.42N. R.40E.

NOTE: This plat is for assessment purposes only and does not represent a survey of the lands on this plat.

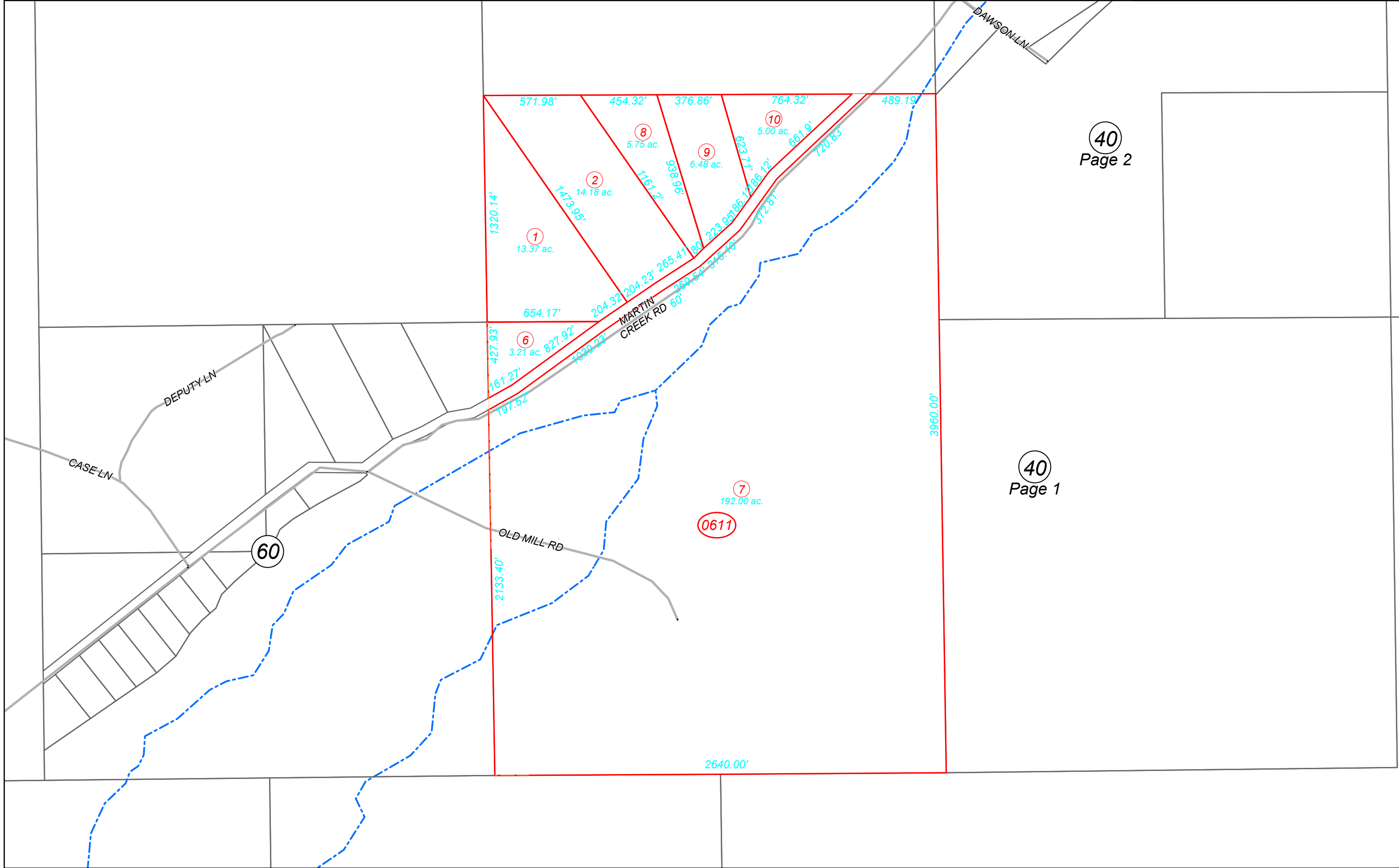


Map Prepared by:  
HUMBOLDT COUNTY ASSESSOR'S OFFICE  
WINNEMUCCA, NEVADA 89445

4-61

1"=500'  
M.D.B. & M.

42N40E



40  
Page 2

40  
Page 1