

06	05	04	03	02	01
07	08	09	10	11	12
18	17	16	15	14	13
19	20	21	22	23	24
30	29	28	27	26	25
31	32	33	34	35	36



**HUMBOLDT COUNTY**  
 SW1/4 SE1/4 SEC. 16 T.43N. R.28E.

*NOTE: This plat is for assessment purposes only  
 and does not represent a survey of the lands on this plat.*

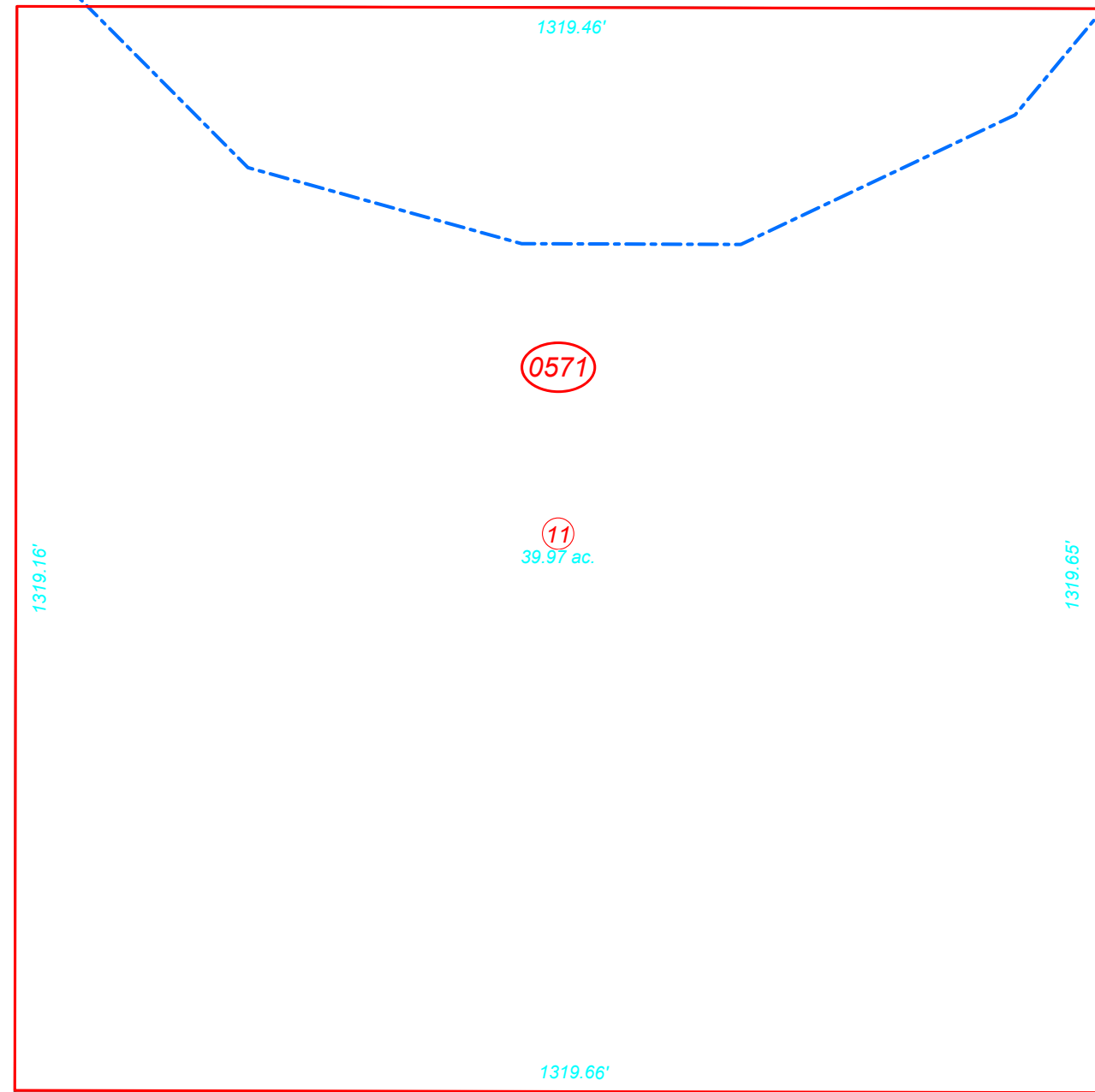


Map Prepared by:  
 HUMBOLDT COUNTY ASSESSOR'S OFFICE  
 WINNEMUCCA, NEVADA 89445

2-57

1"=200'  
 M.D.B. & M.

43N28E



0571

11  
 39.97 ac.

35