

06	05	04	03	02	01
07	08	09	10	11	12
18	17	16	15	14	13
19	20	21	22	23	24
30	29	28	27	26	25
31	32	33	34	35	36



HUMBOLDT COUNTY

T.43N. R.33E.

NOTE: This plat is for assessment purposes only and does not represent a survey of the lands on this plat.

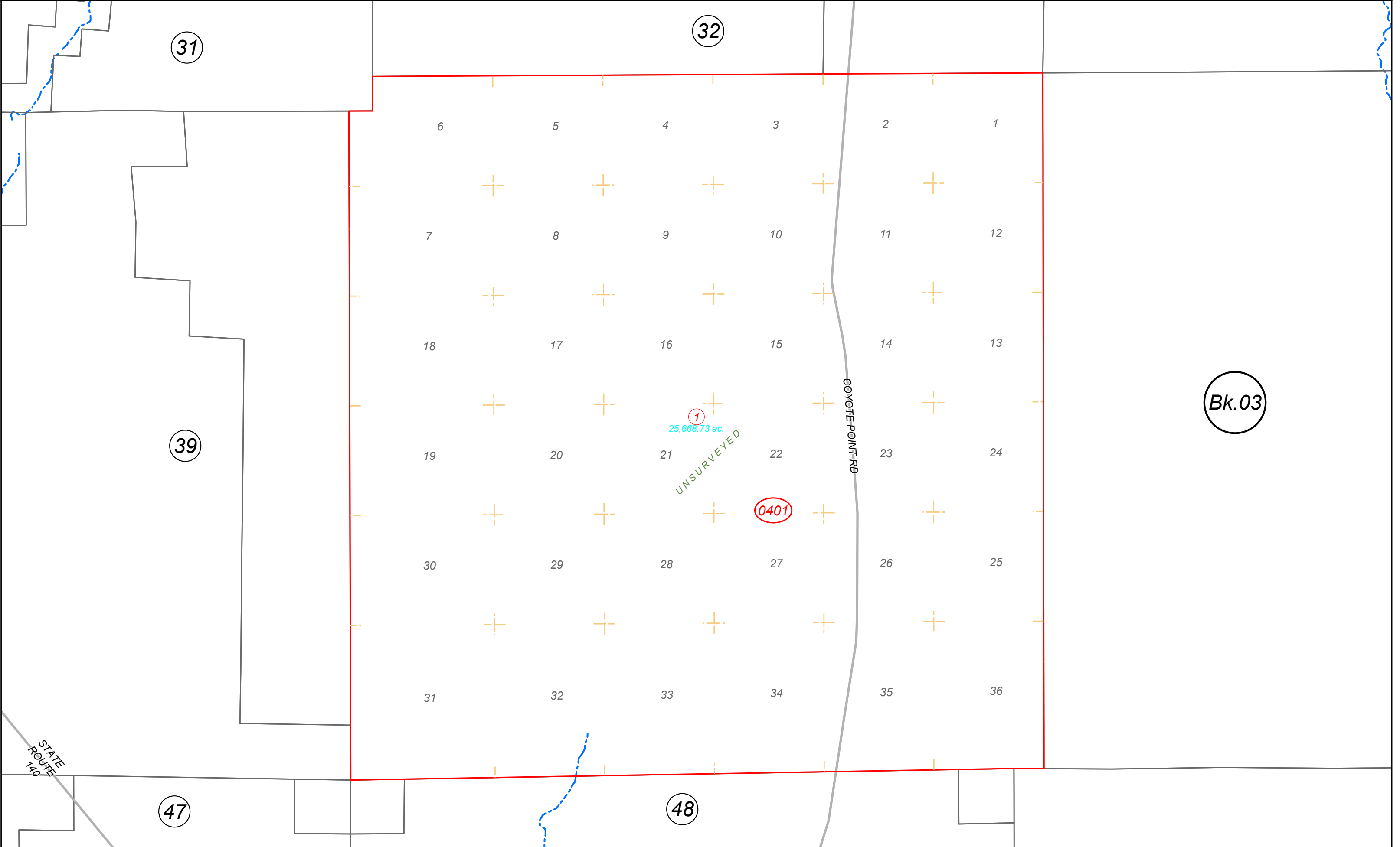


Map Prepared by:
HUMBOLDT COUNTY ASSESSOR'S OFFICE
WINNEMUCCA, NEVADA 89445

2-40

1"=4,000'
M.D.B. & M.

43N33E



31

32

6 5 4 3 2 1

7 8 9 10 11 12

18 17 16 15 14 13

19 20 21 22 23 24

30 29 28 27 26 25

31 32 33 34 35 36

Bk.03

1
25,668.73 ac.

UNSURVEYED

0401

COYOTE POINT RD

STATE ROUTE 140

47

48