

06	05	04	03	02	01
07	08	09	10	11	12
18	17	16	15	14	13
19	20	21	22	23	24
30	29	28	27	26	25
31	32	33	34	35	36



HUMBOLDT COUNTY
NE1/4 SE1/4 SEC. 11 T.43N. R.30E.

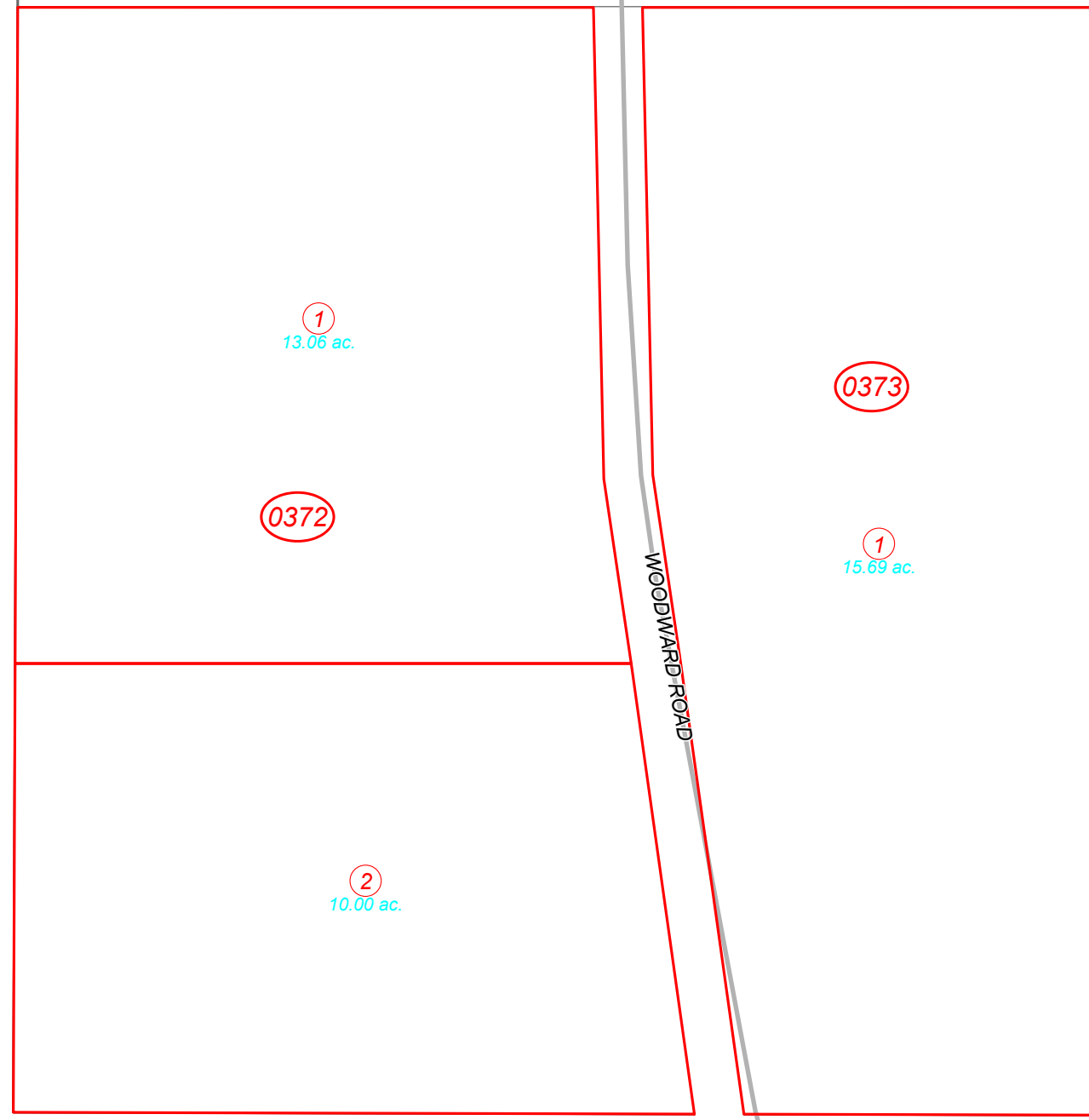
NOTE: This plat is for assessment purposes only and does not represent a survey of the lands on this plat.



Map Prepared by:
HUMBOLDT COUNTY ASSESSOR'S OFFICE
WINNEMUCCA, NEVADA 89445

1"=200'
M.D.B. & M.

43N30E



①
13.06 ac.

0372

②
10.00 ac.

0373

①
15.69 ac.

37
Page 1