

HUMBOLDT COUNTY  
PT. SE1/4 SEC. 11 T.35N. R.37E.

NOTE: This plat is for assessment purposes only  
and does not represent a survey of the lands on this plat.



Map Prepared by:  
HUMBOLDT COUNTY ASSESSOR'S OFFICE  
WINNEMUCA, NEVADA 89445

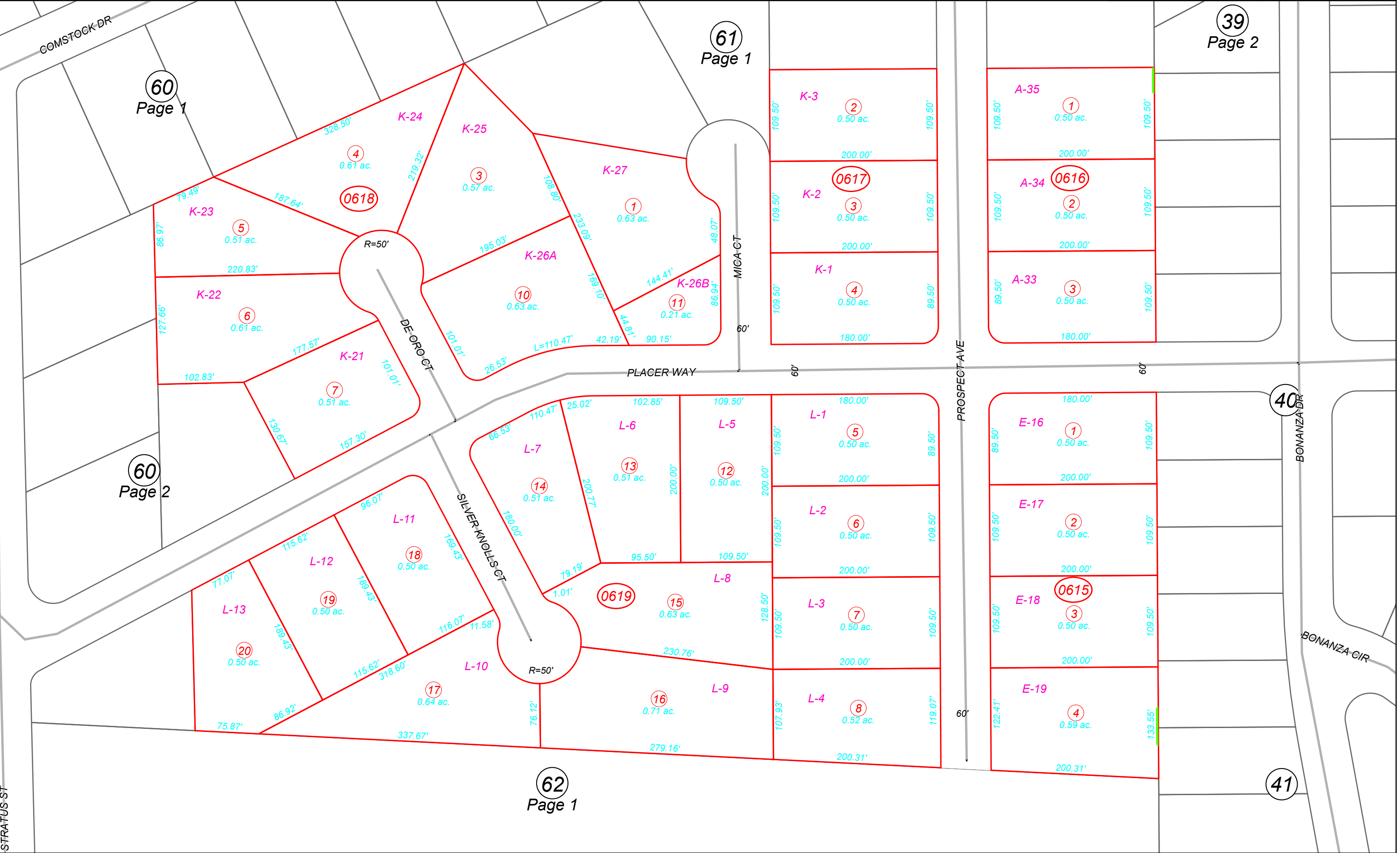
13-61  
Page 2 of 2

1"=100'  
M.D.B. & M.

06	05	04	03	02	01
07	08	09	10	11	12
18	17	16	15	14	13
19	20	21	22	23	24
30	29	28	27	26	25
31	32	33	34	35	36



35N37E



60  
Page 1

61  
Page 1

39  
Page 2

60  
Page 2

62  
Page 1

41